

## Panel mounted receptacle

Part no. 1492

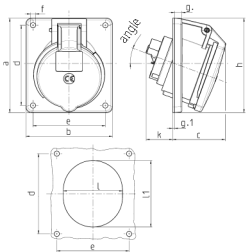


- screw terminals
- 20° inclination
- receptacles optional fitted with auxiliary contact

## Technical specifications

|                           |                     |
|---------------------------|---------------------|
| Ampere                    | 32 A                |
| Poles                     | 3 p                 |
| Voltage                   | 230 V               |
| Clock position            | 6 h                 |
| Hertz                     | 50-60 Hz            |
| Connection technology     | Screw terminals     |
| Contact                   | standard            |
| Protection type           | IP 44               |
| Flange                    | 100x92 mm           |
| Fixing hole               | 85x77 mm            |
| Inclination               | 20 °                |
| Weight                    | 236 g               |
| Declaration of Conformity | VDE, EAC, Kema, CQC |

## Drawing



| Drawing<br>1 MB 260 | Amp.<br>Poles                                    | 16   |     |     | 32  |     |     |
|---------------------|--|------|-----|-----|-----|-----|-----|
|                     |  | 3    | 4   | 5   | 3   | 4   | 5   |
| Dim. in mm          | a  | 73.5 | 100 | 100 | 100 | 100 | 100 |
|                     | b  | 64   | 92  | 92  | 92  | 92  | 92  |
|                     | c  | 50   | 59  | 58  | 62  | 62  | 61  |
|                     | d  | 60   | 85  | 85  | 85  | 85  | 85  |
|                     | e  | 52   | 77  | 77  | 77  | 77  | 77  |
|                     | f  | 5.5  | 5.5 | 5.5 | 5.5 | 5.5 | 5.5 |
|                     | g  | 7    | 8   | 8   | 8   | 8   | 8   |
|                     | g-1  | 2    | 2   | 2   | 2   | 2   | 2   |
|                     | h  | 79   | 100 | 100 | 103 | 103 | 106 |
|                     | k  | 44   | 34  | 34  | 54  | 54  | 49  |
|                     | l  | 52   | 55  | 65  | 67  | 67  | 72  |
|                     | l1   | 60   | 63  | 72  | 82  | 82  | 85  |
|                     | alpha  | 20°  | 20° | 20° | 20° | 20° | 20° |
|                     | Terminal for cond. cross section (mm²) min.-max. | 1.5  | 1.5 | 1.5 | 2.5 | 2.5 | 2.5 |
|                     |  | -4   | -4  | -4  | -10 | -10 | -10 |